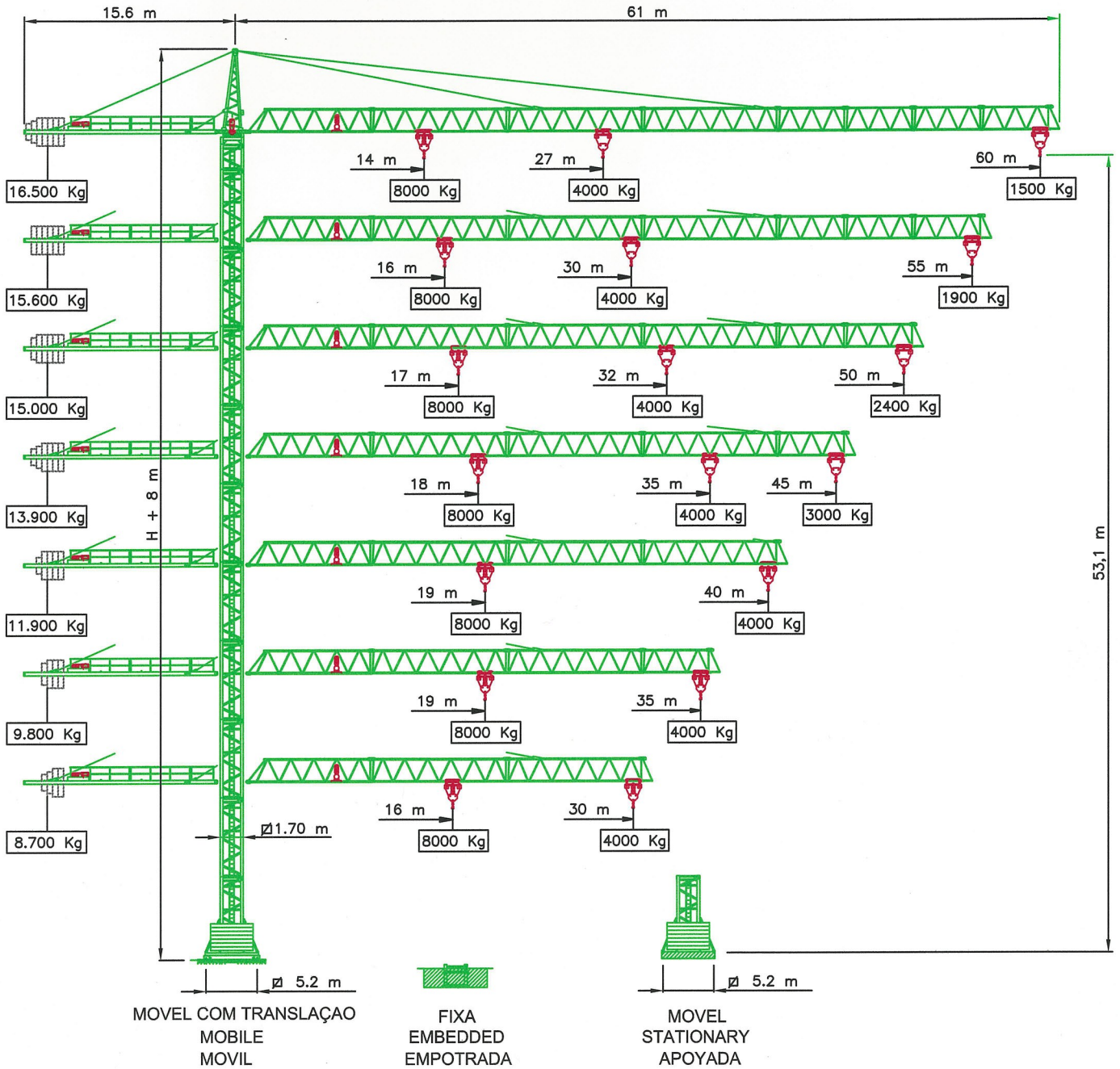


## GUINDASTE DE TORRE - TOWER CRANE - GRÚA TORRE



### MECANISMOS - MECHANISM - MECANISMOS

			4 Kw 15/30/60 m/min
	6/21/24 Kw      4000      4000      2000      Kg 6.5      34      68      m/min		2 x 4.5 Kw 0 - 0.8 r.p.m.
			2 X 5 Kw 25 m/min